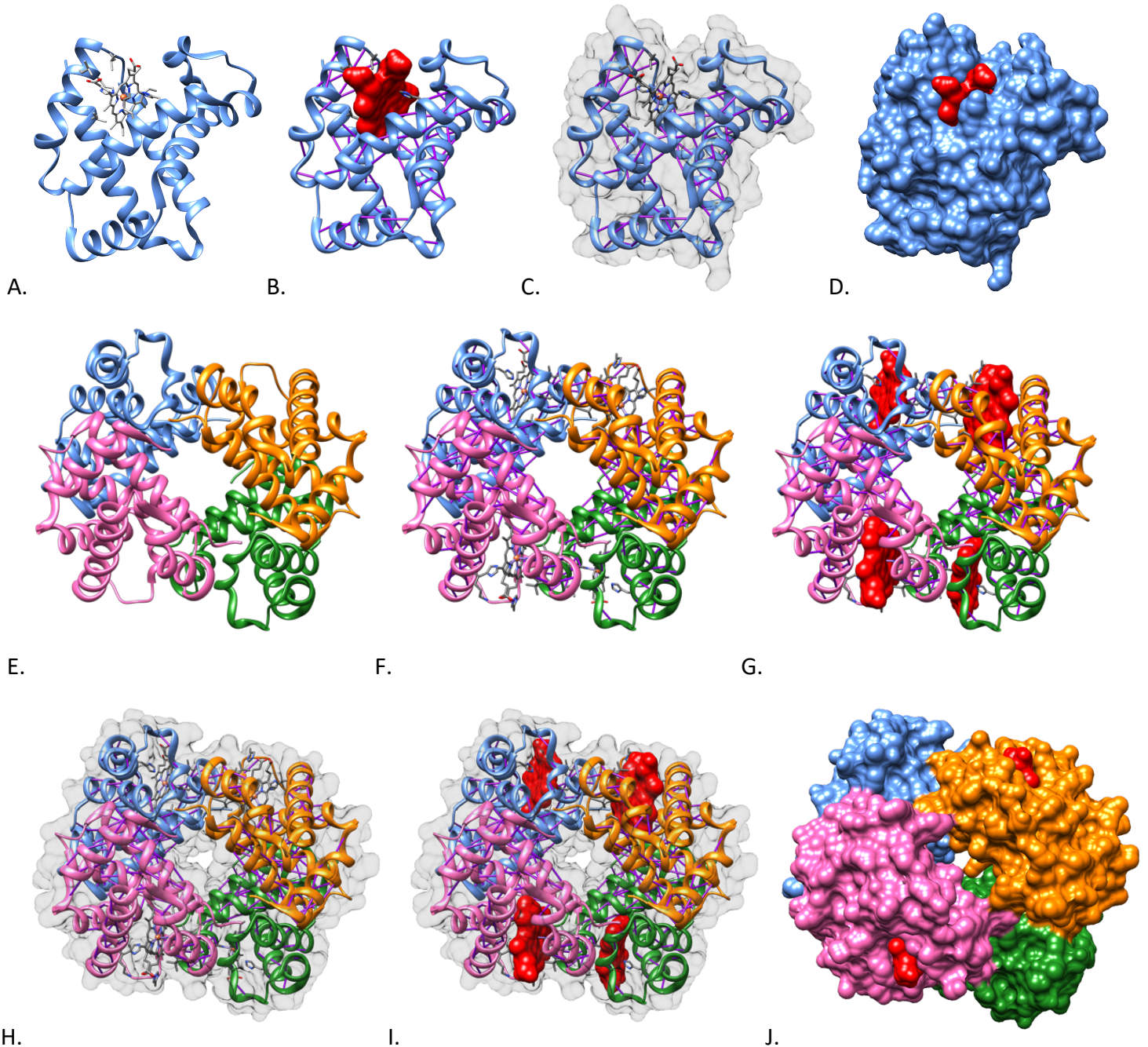


# OXYGEN TRANSPORTER

## Hemoglobin (Deoxyhemoglobin)



### *Structural Representations of Deoxyhemoglobin (2DN2):*

Monomer ( $\beta$ -subunit): **A.** Ribbon model with atomic heme group; **B.** Ribbon model with surface model of heme group (red), hydrogen bonds in purple; **C.** Ribbon model with atomic heme group and transparent surface; **D.** Surface model of both the monomer and heme group.

Tetramer ( $\alpha$ -subunits in pink and orange;  $\beta$ -subunits in blue and green): **E.** Ribbon model; **F.** Ribbon model with atomic heme groups; **G.** Ribbon model with surface models of heme groups (red); **H.** Ribbon model with transparent surface and atomic heme groups; **I.** Ribbon model with transparent surface and surface model of heme groups; **J.** Surface model with heme groups.